

VALVE TESTING SYSTEM

SPECIFICATIONS WAPRO VALVE TESTING SYSTEM

Supply	230 VAC / 10 A / 50 Hz
Performance	approx. 360 pcs/h
Dimensions LxWxH	0.9 m x 0.8 m x 1.4 m

DESCRIPTION

The valve testing system is used as an automatic testing station for various types of valves and their different pressure ranges (3 bar to 12 bar). Before the test, the correct valve type is selected via the integrated HMI. After that, the sliding door can be opened and the valve inserted. When the sliding door is closed, the safety contact is switched and the system is ready for testing. Pressing the start button starts the testing.

FIELDS OF APPLICATION

Different valve types with pressure ranges from 3 bar to 12 bar, used for industrial coffee machines/automatic coffee makers.



Wapro valve testing system 19_14.00.000



Integrated HMI as fixed panel



Testing area

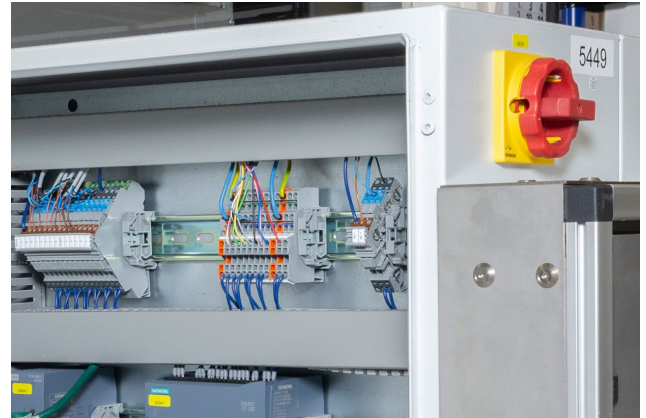


FEATURES

- Freely mountable system
- Easy operation
- Small dimensions
- PLC control
- Safety circuit
- Precise pressure measurement
- High repeatability

ELECTRONICS

A Siemens PLC with integrated HMI that is attached to the system as a fixed panel is used to control the valve testing system. The programming of the PLC, the planning of the electronics and pneumatics as well as the operating concept were designed and realised in-house to meet the customer's needs.



Control cabinet



In-house planned electronics

